

Operating Instructions Typ 712

Application Guidelines

These installation and operating instructions must be followed. Similarly, the exact conditions of use must be taken into account and the performance data of the device must be observed in accordance with the data sheet. The operator must ensure that these instructions are followed so as to guarantee the problem-free operation and long service life of the device.

Design

Direct-acting 3/2-way-solenoid valve with pressure relief (internal) and low switching power, solenoid actuator either with standard or Ex-solenoid. Namur interface and/or G1/4" port connection.

Application Ex-version

Valves with explosion-proof solenoid system as per EEx ed IIC T6, certificate of conformity PTB No. Ex-92.C.1030 can be used during light aggressive ambient conditions and during open-air.

Medium

Pressure lubricated or unlubricated pressure air, instrument-air, nitrogen.

Max. operating pressure: see product label.

Fluid temperature: - 20 bis + 50 °C

Ambient temperature: - 25 bis + 60 °C

5 W coil - 25 bis + 60 °C

7 W coil - 20 bis + 40 °C

Installation

- Pipelines must be cleaned before installation.
- Installation is required, but preferably with solenoid system upright.
- Port Connection:
 - Voltage off: port 2 connected to port 3
port 1 closed
 - Voltage on: port 1 connected to port 2
port 3 closed
- Namur interface:
 - Install O-ring and code pin.
 - Mount and connect valve.
 - Close the not used connection ports.
- or
- Thread connection:
 - Install pipelines.
 - Close the not used connection ports.

Electrical connection

Standard version

Ensure supply voltage/frequency corresponds with that on product label.

Voltage tolerance:

5 W coil +10% and -15%.

7 W coil ± 20 %

Coil can be rotated by coil axis.

Connection with cable plug (DIN 43 650) protection IP65.

Cable plug insert can be rotated by 3 x 90°. Tightening torque for cable plug attachment 1 Nm.



Ex-version

The solenoid system is equipped with a rectifier bridge. It is therefore suitable for alternating and direct current of the same voltage and corresponds to degree of protection IP65.

The valve may only be operated at the voltage specified on the type label.

Voltage tolerance:

5 W coil +10% and -15%.

7 W coil ± 20 %

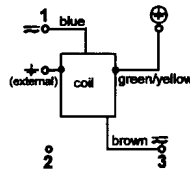
A medium time-lag fuse adapted to the rated current (5 W/0,63 A; 7 W/0,8 A) is to be fitted.

Electrical connection with moulded-in cable or built-on junction box (see picture).

Electrical connection L

without built-in fuse

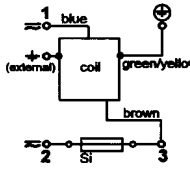
AC/DC coil



Electrical connection K

with built-in fuse

AC/DC coil



The installation is carried out in accordance with the national installation regulations for explosion-proof device.

Trouble-shooting

Check port connections, operating pressure, fuse and voltage supply. If armature does not pull in check for short circuit, voltage interruption or foreign matter impeding armature movement.

Caution: A jammed armature causes by AC coil overheating.

Ask for our technical advice when ordering replacement parts.

Operating Instructions 0507/02_EN-EN_00000000

bürker

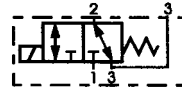
Steuer- und Regeltechnik
Christian-Bürkert-Str. 13-17
74653 Ingelfingen
Telefon (0 79 40) 10-111
Telefax (0 79 40) 10-448
www.buerkert.com
info@de.buerkert.com

Berlin, Ph. (0 30) 67 97 17-0
Frankfurt, Ph. (0 61 03) 9 41 40
Hannover, Ph. (05 11) 902 76-0
Dresden, Ph. (03 59 52) 36-300
Dortmund, Ph. (0 23 73) 96 81-0
München, Ph. (0 89) 8 29 22 80
Stuttgart, Ph. (07 11) 451 10-0

International

Australia: Seven Hills NSW 2147, Ph. (02) 1300 888 868
Austria: 1150 Wien, Ph. (01) 894 13 33
Belgium: B-2110 Wijnegem, Ph. (03) 325 89 00
Brazil: 04715-005 São Paulo - SP, Ph. (011) 51 82 00 11
Canada: Oakville, Ontario L6L 6M5, Ph. (905) 847 55 66
China: Shanghai, Ph. (8621) 58 68 21 19
Czech Republic: 60200 Brno, Ph. (543) 25 25 05
Denmark: 2730 Herlev, Ph. (44) 50 75 00
Estonia: EE-12915 Tallin, Ph. (372) 644 06 98
Finland: FI-00370 Helsinki, Ph. (09) 54 97 06 00
France: 67220 Triembach au Val, Ph. (0388) 58 91 11
Hong Kong: Kwai Chung NT, Ph. 24 80 12 02
India: Chennai 600 028, Ph. (044) 52 30 34 56
Italy: 20060 Cassina De' Pecchi (Mi), Ph. (02) 95 90 71
Japan: Tokyo 166-0004, Ph. (03) 53 05 36 10
Korea: Seoul 153-811, Ph. (02) 34 62 55 92

Malaysia: 11960 Penang, Ph. (04) 64 350 08
Netherlands: NL-3542 DP Utrecht, Ph. (0346) 58 10 10
Norway: 2013 Skjetten, Ph. (63) 84 44 10
Philippines: Paranaque City, Ph. (02) 776 43 84
Poland: PL-02-904 Warszawa, Ph. (022) 840 60 10
Portugal: Sales office in Spain, Ph. (21) 21 28 490
Singapore: Singapore 408933, Ph. 68 44 22 33
South Africa: Millenium Business Park, Ph. (011) 574 60 00
Spain: 08970 Sant Joan Despi, Barcelona, Ph. (93) 477 79 80
Sweden: 21120 Malmö, Ph. (040) 664 51 00
Switzerland: 6331 Hünenberg ZG, Ph. (041) 785 66 66
Taiwan: Taiwan 115, Ph. (02) 26 53 78 68
Turkey: TR-Yenisehir-Izmir, Ph. (0232) 459 53 95
United Kingdom: Stroud, Glos, GL5 2QF, Ph. (01453) 731353
USA: Irvine, CA 92614, Ph. (949) 223 31 00



Operating Instructions Typ 712

Application Guidelines

These installation and operating instructions must be followed. Similarly, the exact conditions of use must be taken into account and the performance data of the device must be observed in accordance with the data sheet. The operator must ensure that these instructions are followed so as to guarantee the problem-free operation and long service life of the device.

Design

Direct-acting 3/2-way-solenoid valve with pressure relief (internal) and low switching power, solenoid actuator either with standard or Ex-solenoid. Namur interface and/or G1/4" port connection.

Application Ex-version

Valves with explosion-proof solenoid system as per EEx ed IIC T6, certificate of conformity PTB No. Ex-92.C.1030 can be used during light aggressive ambient conditions and during open-air.

Medium

Pressure lubricated or unlubricated pressure air, instrument-air, nitrogen.

Max. operating pressure: see product label.

Fluid temperature: - 20 bis + 50 °C

Ambient temperature:

5 W coil - 25 bis + 60 °C

7 W coil - 20 bis + 40 °C

Installation

- Pipelines must be cleaned before installation.
- Installation is required, but preferably with solenoid system upright.
- Port Connection:
 - Voltage off: port 2 connected to port 3
port 1 closed
 - Voltage on: port 1 connected to port 2
port 3 closed
- Namur interface:
 - Install O-ring and code pin.
 - Mount and connect valve.
 - Close the not used connection ports.
- or
- Thread connection:
 - Install pipelines.
 - Close the not used connection ports.

Electrical connection

Standard version

Ensure supply voltage/frequency corresponds with that on product label.

Voltage tolerance:

5 W coil +10% and -15%.

7 W coil ± 20 %

Coil can be rotated by coil axis.

Connection with cable plug (DIN 43 650) protection IP65.

Cable plug insert can be rotated by 3 x 90°. Tightening torque for cable plug attachment 1 Nm.



Ex-version

The solenoid system is equipped with a rectifier bridge. It is therefore suitable for alternating and direct current of the same voltage and corresponds to degree of protection IP65.

The valve may only be operated at the voltage specified on the type label.

Voltage tolerance:

5 W coil +10% and -15%.

7 W coil ± 20 %

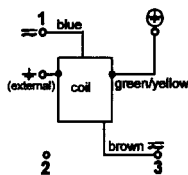
A medium time-lag fuse adapted to the rated current (5 W/0,63 A; 7 W/0,8 A) is to be fitted.

Electrical connection with moulded-in cable or built-on junction box (see picture).

Electrical connection L

without built-in fuse

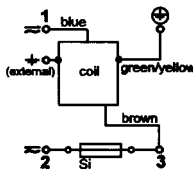
AC/DC coil



Electrical connection K

with built-in fuse

AC/DC coil



The installation is carried out in accordance with the national installation regulations for explosion-proof device.

Trouble-shooting

Check port connections, operating pressure, fuse and voltage supply. If armature does not pull in check for short circuit, voltage interruption or foreign matter impeding armature movement.

Caution: A jammed armature causes by AC coil overheating.

Ask for our technical advice when ordering replacement parts.